

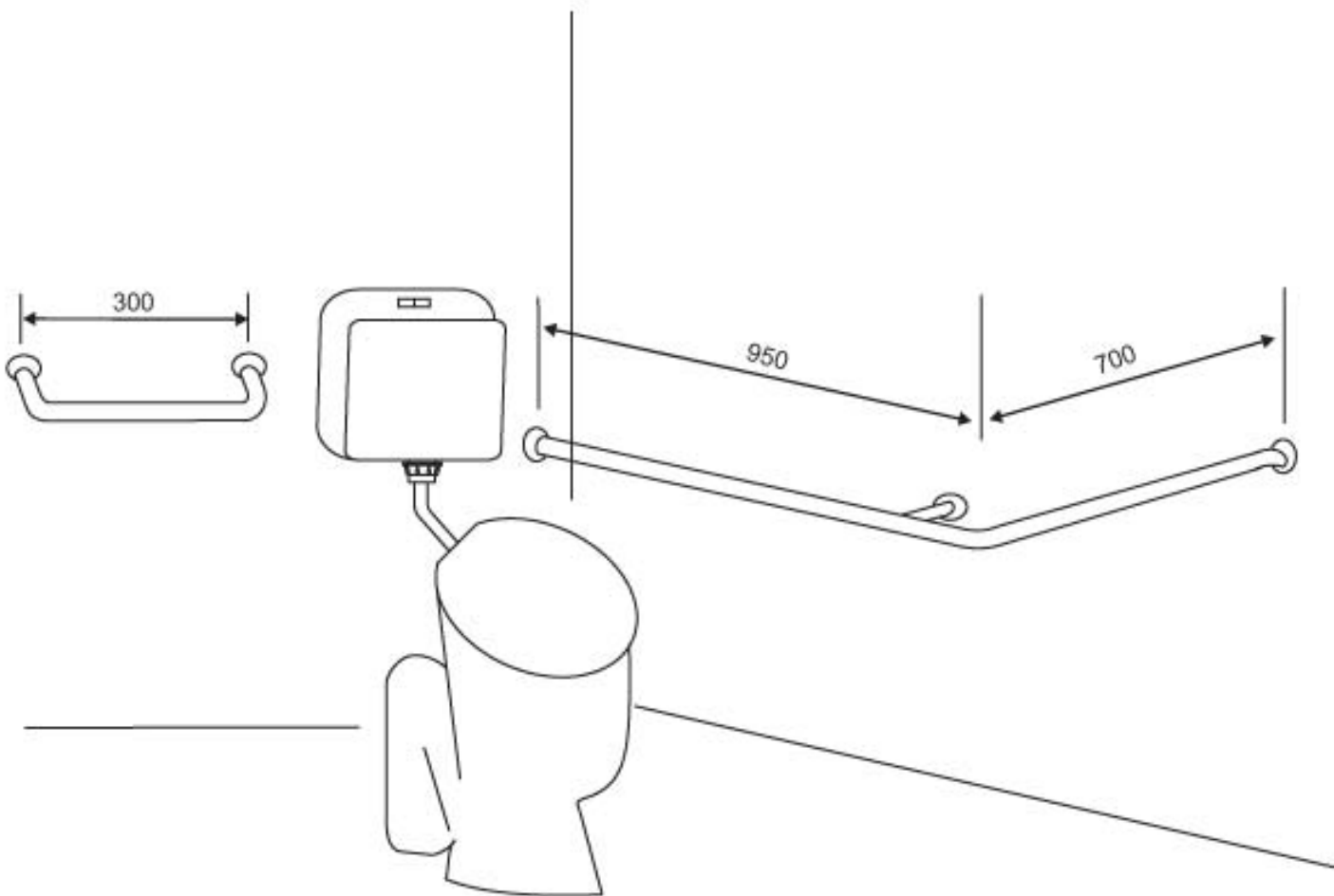
ADVANCE STAINLESS STEEL PTY LTD

8 Somerset Street Minto NSW 2566

Phone: (02) 9603 5688 Fax: (02) 9603 5828

CONCEALED DISABLE TOILET RAILS

Poroduct code: ASSCDLH 2



Concealed disabled rail as draw left hand
Concealed disabled rail right hand opposite
Grade 304 satin finished
Available in 32mm & 38mm dia
Typical use: -Nursing home
-Hospital
-Council Amenities